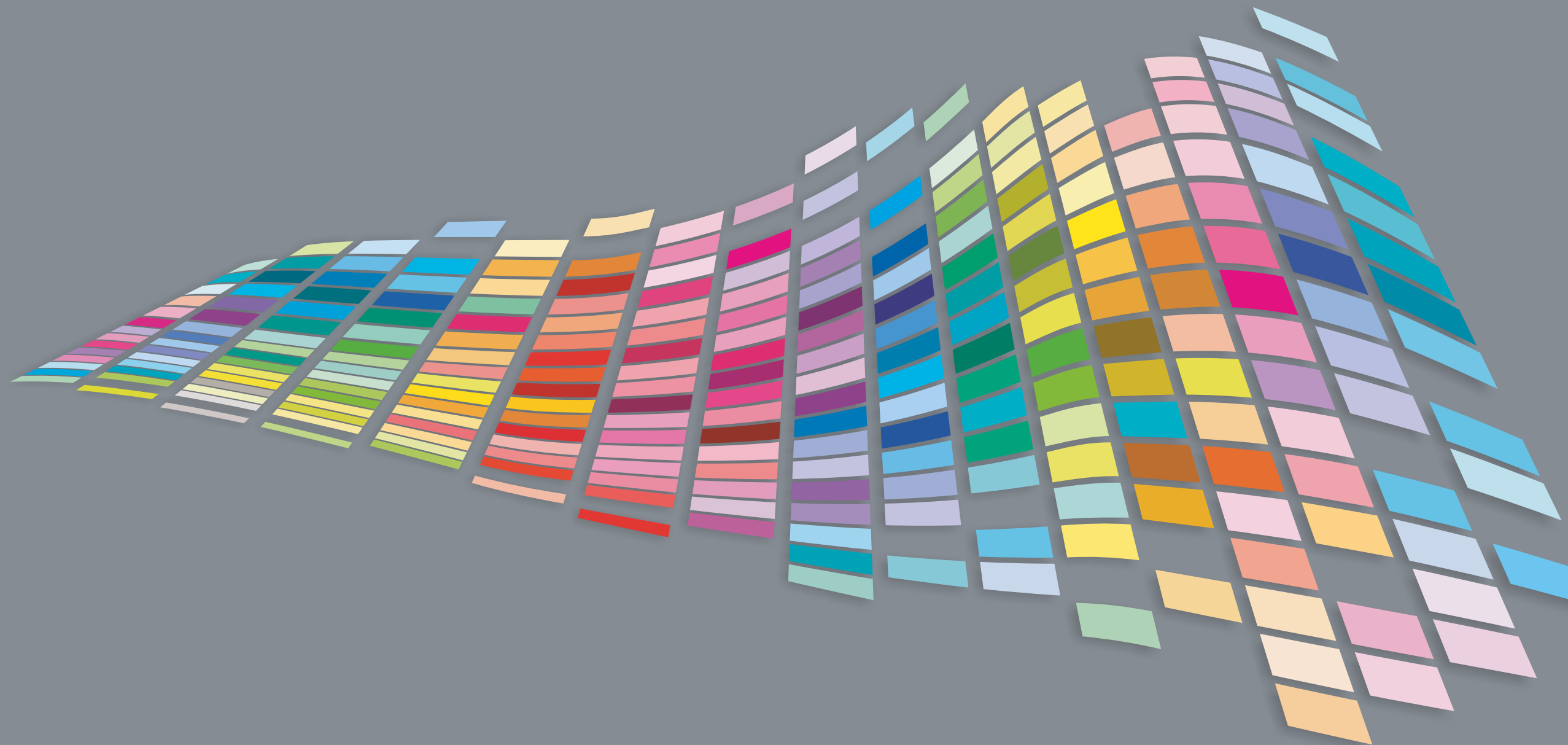


INK JET
TEXTILE
PRINTER

QualiJet
R500
based on MIMAKI TS500-1800
8 colors



INK JET PRINTER

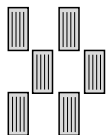
QualiJet R500

based on MIMAKI TS500-1800
8 colors



PRINT HEADS	On-demand Piezo head (six printheads with three staggered configuration) Water Based, variable dot 1280 nozzles / head (1 head = 320 nozzles 4 lines) Adjustable from 1,5 to 7 mm
PRINTING RESOLUTION	300/450/600/900/1200dpi - 6,8,12,16 passes - Uni and Bidirectional
PRINTING CLEANING	Automatic purge cycle with cleaning station
PRINTING WIDTH	1.800mm
INKS	Open ink system - water based - (only certified by MIMAKI)
ENVIROMENT	Temperature: 20-35° C - Humidity 35-65%
INK LINE (EACH CHANNEL)	Ink degassing, filtering to prevent nebulization of inks
INK FEED SYSTEM	1x2 litres bottle per color, with automatic level detection
FABRIC FEED	Powered unwinder for fabric maximum width: 1830 mm, roll up to ø 400mm, 100kg, with tension control
FABRIC TRASPORT	High precision adhesive belt system with brush washing unit, fabric press device
FABRIC EXIT	Powered winder for fabric maximum width: 1830 mm, roll up to ø 400mm, 100kg, with tension control
ELECTRIC SUPPLY	Plotter: 200V/ 240VAC - 20A Blanket: 380VAC - 50/60 Hz
PRINT RIP	Open to any adapted print rip

6 PRINTING HEADS (8 colors)	PRINTING SPEED IN SQUARE METERS PER HOUR			DRYER	OVERALL DIMENSIONS PRINTER+DRYER
	HIGH SPEED	SPEED	HIGH QUALITY		



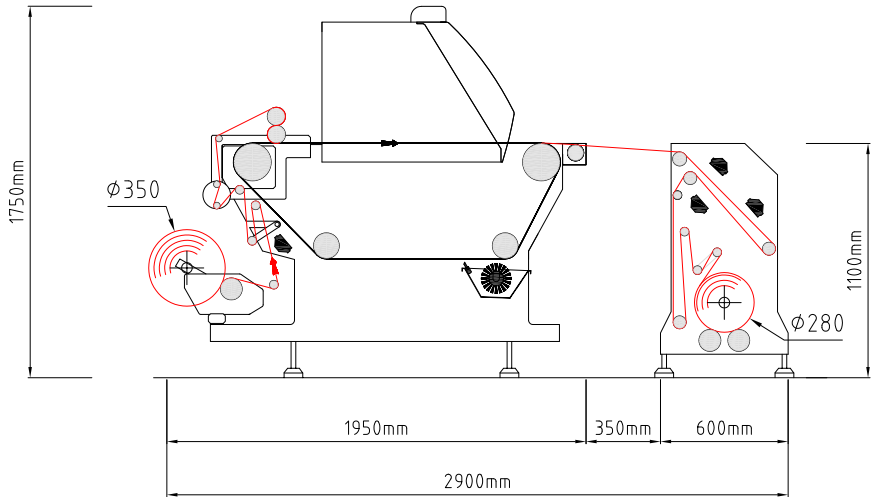
60 sqm	52 sqm	26 sqm
600x450 dpi 6 pass Bi Hi	600x600 dpi 8 pass Bi Hi	600x1200 dpi 16 pass Bi Hi

Three infrared lamps
(1,5 Kw x 3) with fans

L=2.900mm
W=3.800mm
weight=1.900 kg

Remark: 600x600dpi 8 pass Bi Hi = print quality of Mimaki JV5 - 540x720dpi 8 pass Bi Hi (28 sqm/h)

Reference official Mimaki datas



Printheads group



Cleaning station



Mimaki degassing module



Fabric inlet



Belt washing system

